

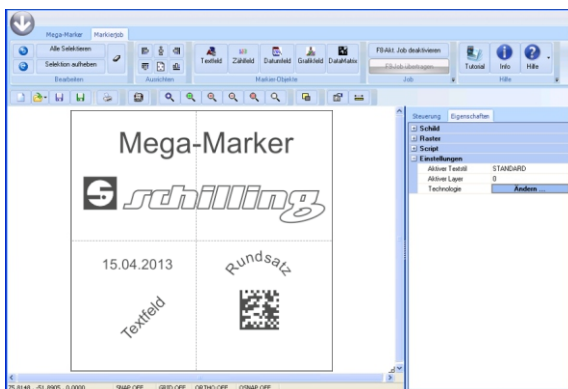
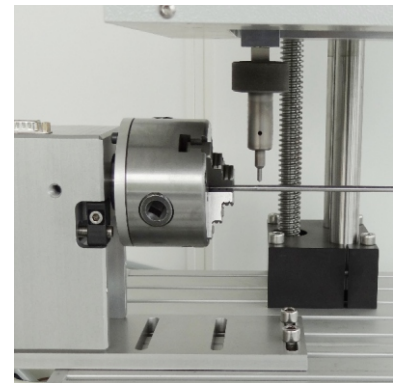
*A class better!*



## Microdot Marking

- \* *The independently programmable marking system with the innovative control system*
- \* *Permanent, direct part marking in seconds*
- \* *Easy operation*
- \* *All-In-One device: Sturdy, reliable, compact, professional*
- \* *Easy integration into production lines*

*Optional:  
Automatic Rotary Fixture  
For marking round pieces*



### PC-Software "Schillmarker 2"

- \* *New graphic user interface*
- \* *Logos & Graphics*
- \* *Dates & serial numberings with pre- and suffix function*
- \* *Wide range of fonts*
- \* *Linear, circular and angular tags*
- \* *D2-matrix codes*
- \* *Multilinguale programme*
- \* *Optional: Import of databases*

### Perfect Results

- \* *The finest microdot marking on the market*



<b>Marking area x / y</b>	<b>100 x 100 mm</b>
Height adjustment	245 mm
Marking speed	1 mm/s to 40 mm/s, 1 char/s 3 mm height
Traverse speed	max. 80 mm/s
Marking resolution	0,05 mm both x/y axes
Character height	from 0,1 mm freely editable
Stylus frequency	50 - 120 Hz
Impact force	adjustable
Height compens. of needle	approx. 4 mm
<b>Dimensions ( Lx W x H; mm)</b>	
Marking head	251 x 255 x 189
Column and base	370 x 400 x 760
<b>approx. Weight in kg</b>	
Marking head	9,4
Column and base	18,6
Supply	90 - 265 VAC 50/60 Hz
Memory	64 intern memory
Font	DIN 1451m, further ones on request
Formats	linear, angular and circular text, date, counter with pre- and suffix function



**Portable Version**  
(Optional)  
With handles and ground  
plate, incl. prism