

Portable Microdot

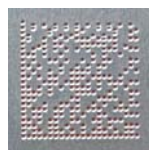


A class better!



The innovative hand-held marker with state-of-the-art touch screen and a unique compact design: lightweight and with marking dynamics that have yet to be matched in its category.

- * 110x30mm marking field
- * **Lightweight:** only 3,65 kg (this includes the controller)
- * Nonetheless powerful and suitable for especially deep marking jobs
- * Features a frame made from aluminium and a hardened ball screw shaft that is used for actuation
- * High quality lettering even in high speed marking environments
- * Operation with or without connected PC
- * Linear or circular texts, dates, times, counters, logos, serial numbers, Data Matrix codes, drawings, and vehicle identification numbers (VIN)
- * Optional basic frame with V-prism for circular surfaces
- * Optional mounting stand for use as table-top device



Large 7" colour graphics display with touch screen

- * **Intuitive user interface**
- * **User-friendly import of graphics and full graphics preview**
- * **Numerous marking cycles can be programmed**
- * **With parameters database**
- * **Customizable reference point**
- * **Teach-in function**
- * **Personalized user rights possible**
- * **Multilingual operating program**



Portable Microdot

Scope of delivery:

- **Portable Microdot marker with integrated controller, 110x30 mm marking field**
- **Integrated pressure relief valve, air filter and power supply unit**
- **Pneumatics tubing**
- **ø 3 mm needle component**
- **"Stamper 2.0" software**

A class better!



Technical specifications:

| | |
|------------------------------------|--|
| Marking field | X axis = 110mm, Y axis = 30mm (resolution = 0,025mm/step) |
| Dimensions | Width: 216mm, height: 260mm, depth: 305mm (handle included) |
| Weight | 3,65 kg (controller included); weight of the marking head: 2 kg |
| Safeguards | closed enclosure system (guided covering plates for mechanic components) |
| Power supply | 90 - 264 VAC (50/60Hz) 40 W power input |
| Pneumatics connection | maximum 6 bar (consumption 5 NI/min) oil-free, dry air |
| Display | 7" colour graphics display with touch screen |
| Method of operation | Operating and programming with or without connected PC |
| Interfaces | Ethernet, Bluetooth, USB, RS-232/485 serial, digital I/Os |
| Standard programming | Linear and circular texts, dates, times, counters, serial numbers, vehicle identification number (VIN), logos, drawings |
| Marking speed | Up to 4 characters/s |
| Density of dots | 0,1 - 2 mm (maximum 100 dots/cm) |
| On board storage | MicroSD with 4 GB and more |
| Available marking strength | Electronically controlled |
| Operating languages | German - English - Spanish - French - Italian |
| Character sets | True type and vector character sets |
| Other functions | <ul style="list-style-type: none">* Improved user-friendly user interface for flexible data input* Real-time diagnostics indicating the state of the device* Full graphics preview* PC software for on-line and off-line creation and modification of marking jobs* Uploading and downloading of marking jobs via Ethernet or USB ports* Importing and marking of CAD drawings (PLT, DXF file formats)* Preset marking parameters for user-friendly configuration (depth, speed, etc.)* Selection of marking methods (synchronical by dots, controlled frequency, stepless) |
| 2D Data Matrix code marking | <ul style="list-style-type: none">* Dynamic coding without connected PC (ECC200 error correction code)* Complete algorithm for rectangular and quadratic Data Matrix Code* Selection of dot-per-cell formats: 1x1, 2x2, 3x3 (NASA regulations) |