

## Requirements:

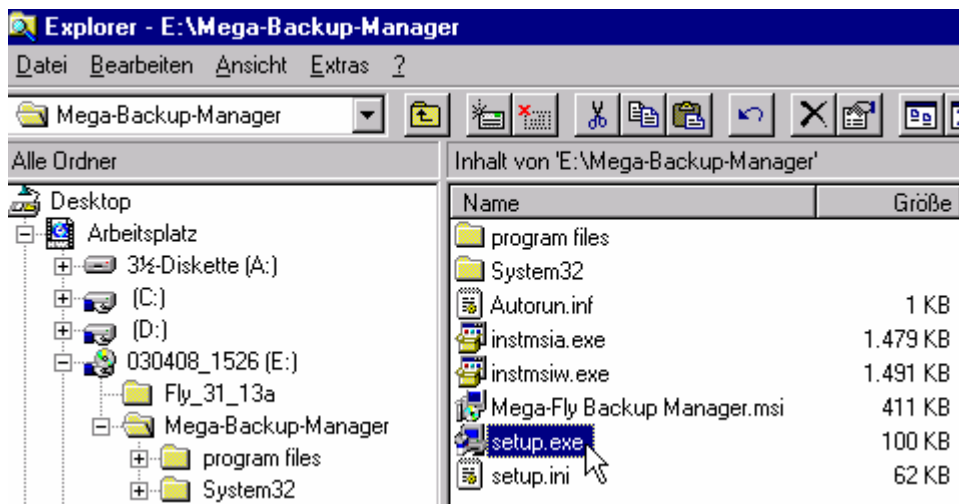
- PC with serial interface ( COM 1, COM 2 ...)
- All „active“ jobs must be „de-activated“!
- The user number under „Mega-Fly -> Job -Administration -> Fly“ must correspond to the fabrication number on the back side of the PDA!

## Content:

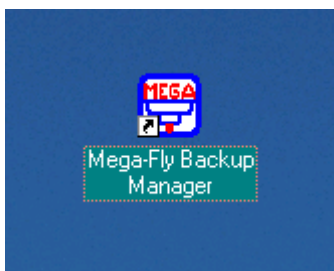
Software installation .....	1
Data securing from PDA to PC.....	2
Re-secring from PC to PDA.....	4
Data securing from Emulator .....	6

## Software installation

1. Open Software from CD and install „Mega-Backup-Manager“.



2. The icon „Mega-Fly-Backup-Manager“ will then appear on the desktop.



## Data securing from PDA to PC

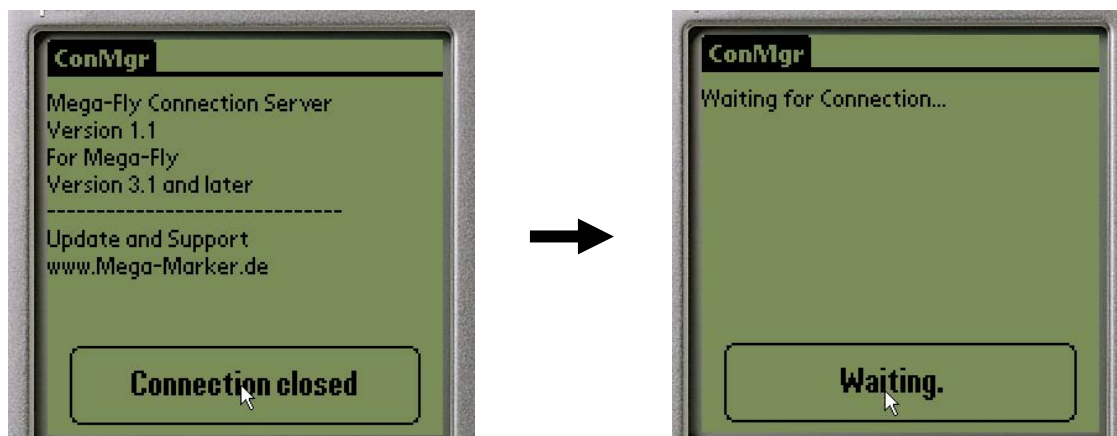
- 1 Connect PDA with data cable and the data cable with COM-Interface.
- 2 Turn PDA on by clicking on house button.



- 3 Activate programme "ConMgr".



- 4 Click on button "connection closed".



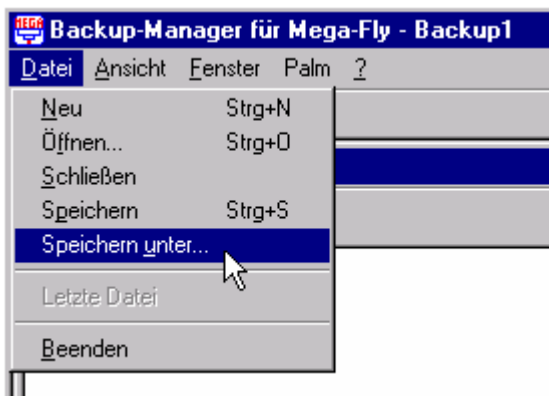
- 5 Start Software.



- 6 To transfer data click on left „Icon“ in PC-Software.



- 7 Save file after finishing transfer.



The data securing is now on your PC.

- 8 Click on palm „Waiting..“ End PC-Software.
- 9 In Mega-Backup-Manager, you can now call up single saving files and copy and delete Jobs.

## Re-securing from PC to PDA

**! Attention ! Existing Jobs on PDA will be automatically deleted !**

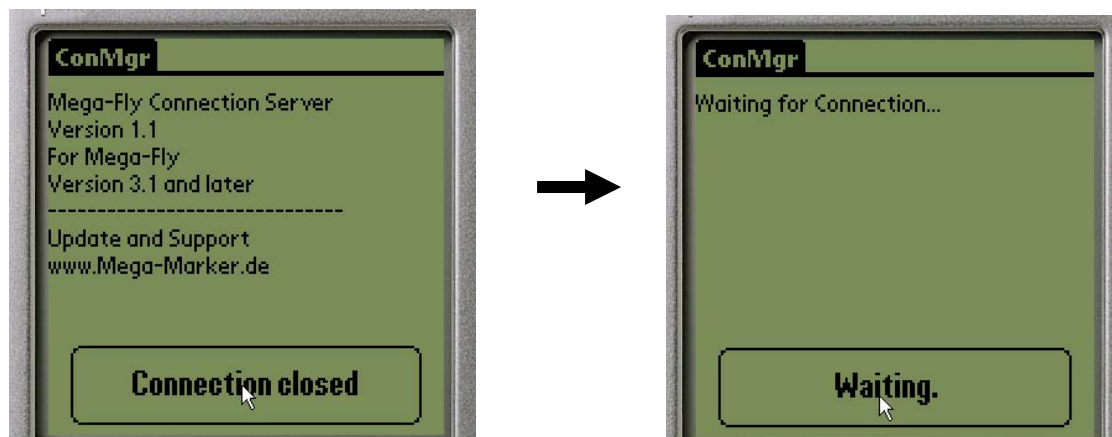
- 1 Connect PDA with data cable and data cable with COM-Interface.
- 2 Turn PDA on by clicking on house button.



- 3 Activate Programm "ConMgr".



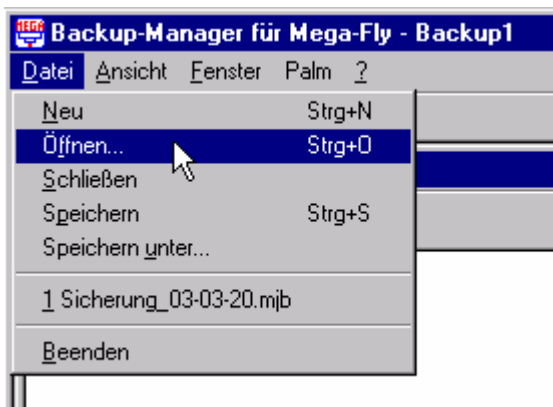
- 4 Click on button "connection closed".



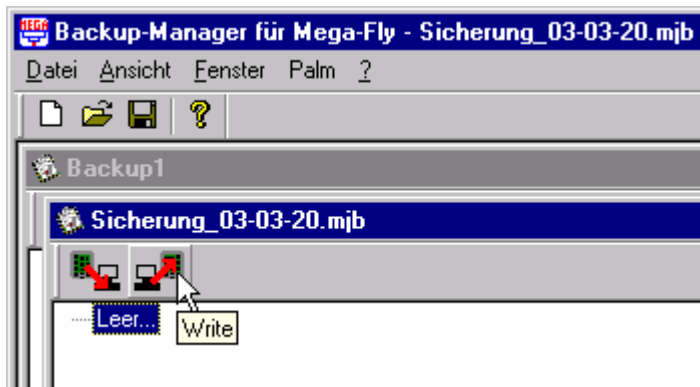
5 Start Software.



6 Open file. ( The last four files will be shown below.)



7 To transfer data click on right „Icon“ in PC-Software.



Data Securing is now on the PDA.

8 Click on Palm „ Waiting..“. End PC-Software.

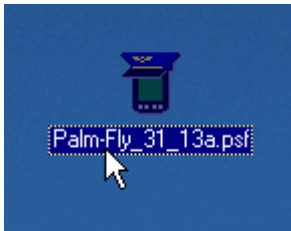
## Data securing from Emulator

Exchanging and completing data from Emulator and Palm.

Requirements:

- Emulator-Software (Softwarekit Art. No. 61.1200.1)
- 2 serial interfaces (COM 1 und COM 2)
- or 2 PC's
- Serial cable with adapter (Softwarekit)

- 1 Connect serial cable with Interfaces (COM 1 und COM 2).
- 2 Start Emulator-Software on Desktop.



- 3 The next steps are similar to those on page 2 „Data securing from PDA to PC“.
- 4 The re-securing from Emulator is to be done as described on page 4 „Re-securing from PC to PDA“.