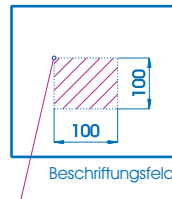


*A class better!*



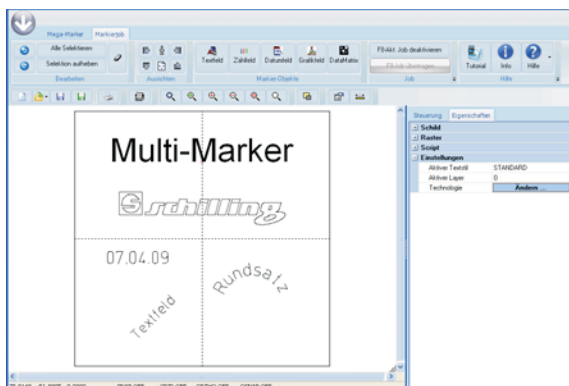
## Microdot Marking

- \* *The independently programmable marking system with the innovative control system.*
- \* *Permanent, direct part marking in seconds.*
- \* *Easy to use with either PDA or PC.*
- \* *All-In-One device: Sturdy, reliable, compact, professional.*
- \* *Jobs can be created without a direct connection to the Microdot Machine. Therefore, convenient working in any office or workplace is possible.*
- \* **PERFECT RESULTS.**



### PDA Palm Tungsten E2 and Software "Fly"

- \* *Enables the Mega Marker to be programmed without a PC.*
- \* *Dates & serial numberings with pre- and suffix function*
- \* *Linear, circular and angular tags*
- \* *Logos & Graphics on request*
- \* *Interfaces: USB, Infra-red, Bluetooth*
- \* *Incl. Organizer, Web Browser, SMS, OCR*



### PC-Software "Schillmarker 2"

- \* *New graphic user interface*
- \* *Logos & Graphics*
- \* *Dates & serial numberings with pre- and suffix function*
- \* *Wide range of fonts*
- \* *Linear, circular and angular tags*
- \* *D2-matrix codes*
- \* *Multilingual programme*
- \* *Optional: Import of databases*

<b>Marking Area x / y</b>	<b>100 x 100 mm</b>
Height adjustment	298 mm
Marking speed	1 mm/s to 50 mm/s, 1 char/s 3 mm height
Traverse speed	max. 80 mm/s
Marking resolution	0,05 mm, both X/Y axes
Character height	from 0.1 mm freely editable
Stylus frequency	0 - 150 Hz
Impact force	adjustable
Height compens. of needle	approx. 10 mm
Air requirements	200 l/min
Working pressure	max. 6 bar
	<b>Dimensions (LxWxH;mm)</b>
Marking head	251x255x189
Column and base	370x400x760
	<b>approx. Weight in kg</b>
Marking head	9.4
Column and base	18.6
Supply	90-265VAC 50/60 Hz
Memory	1 MB Flash / 1 MB RAM
Font	DIN 1451m
Formats	Linear, angular and circular text, date, counter with pre- and suffix function, logos on request
Brand	Mega-Marker is a registered trademark



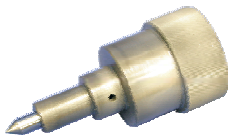
**Portable Version**  
(Optional)  
With handles and ground plate, incl. prism



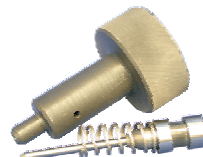
### Needle Set

- Light replacement needles with 60° / 90° / 118°
  - Normal piston and short piston, with springs
  - O-Ring, washers and allen-key
- Art.-Nr.: 66.64SET.3

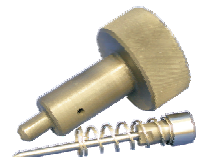
### Complete Needle Assemblies



**Heavy**  
**Needle assembly ø6mm**  
For deep markings  
Standard angle of the tip: 60°  
Other angles: 90° / 118°  
Art. No.: 66.62150.6S



**Light**  
**Needle assembly ø3mm**  
For normal markings  
Standard angle of the tip: 60°  
Other angles: 90° / 118°  
Art. No.: 66.62032.3S



**Light, soft**  
**Needle assembly ø3mm**  
For fine markings  
Standard angle of the tip: 60°  
Other angles: 90° / 118°  
Art. No.: 66.62132.3S

