



Schilling
Marking Systems GmbH

Instruction Manual

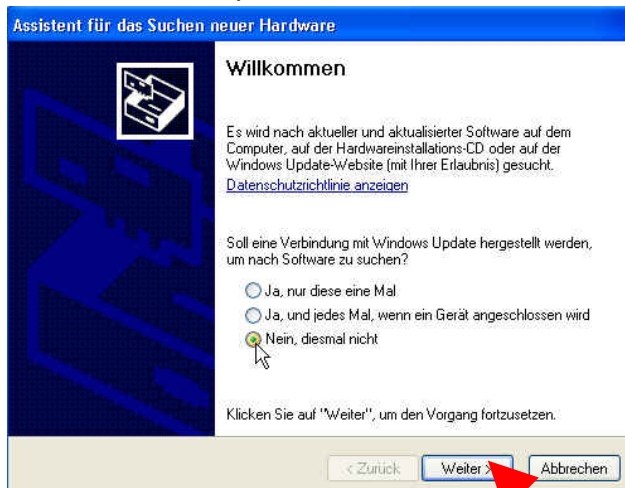
**for the Installation of
the Printer Software
(windows-programmes)
and the
Software Labelview**

SP100+

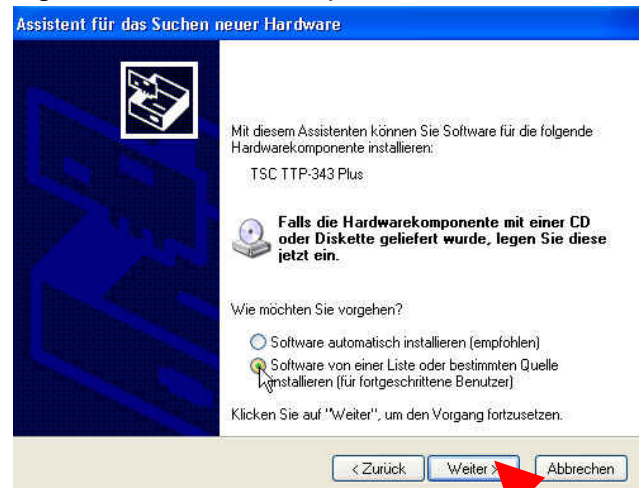
Installation of the Printer Software for Windows-Programmes:

Connect the printer SP100+ to your PC with the corresponding cable and insert the paper. Place the CD with the Software into the CD drive. Switch on the printer. The Assistant is started automatically by finding the new hardware. Please note: The installation is in German. However, the Software will be in English.

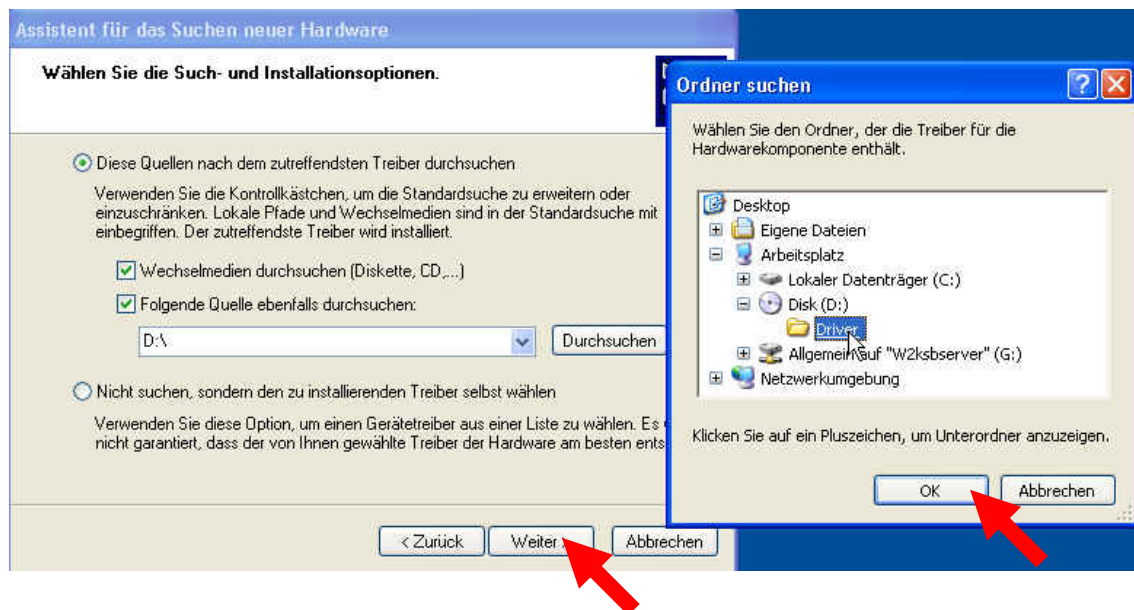
Select the last option.



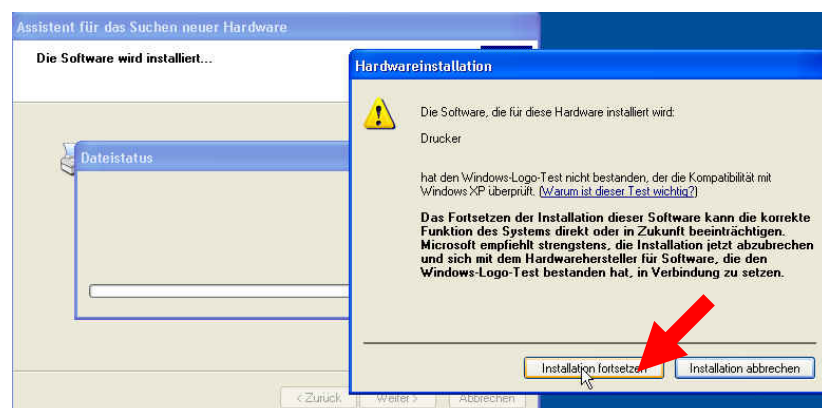
Again select the last option.

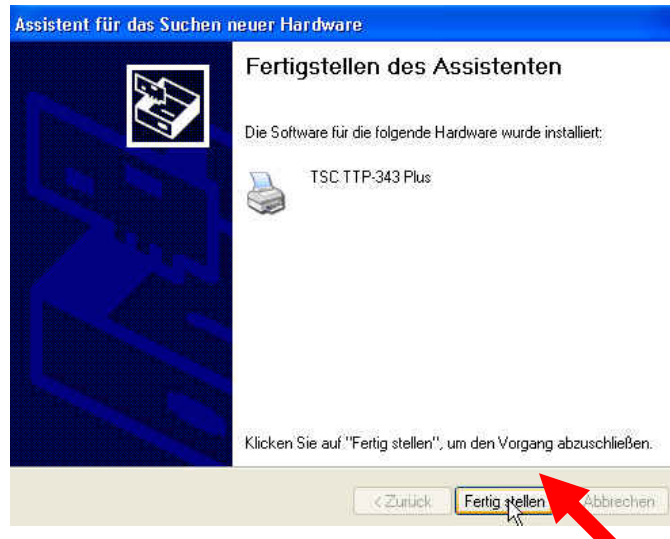


Click on „Durchsuchen“, select your CD drive and click once on „Driver“.

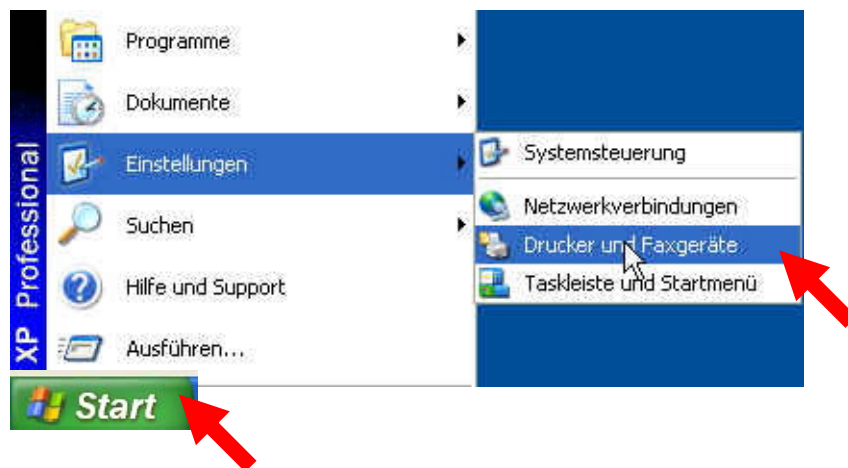


Click on „Installation fortsetzen“ (= continue installation)

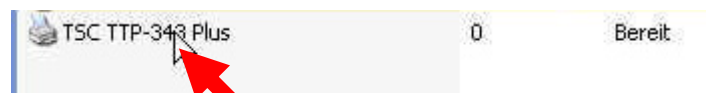




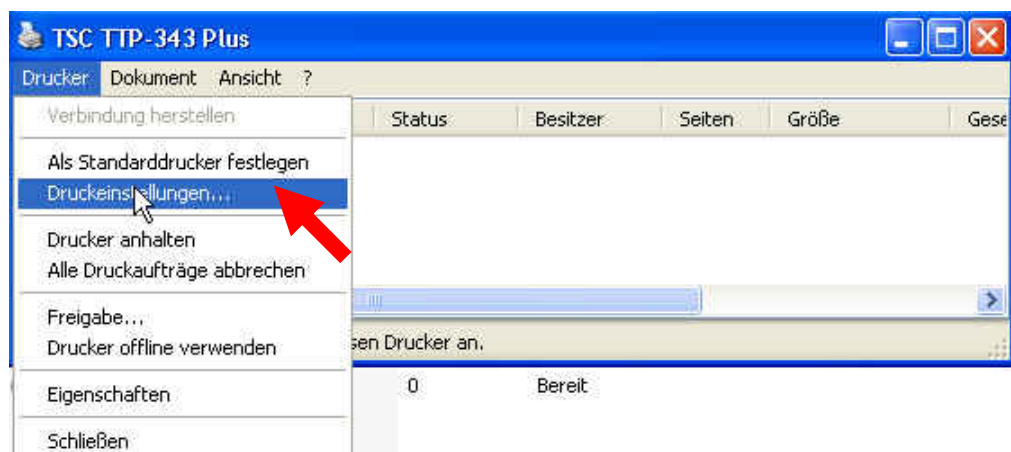
To change the settings of the printer go to „Start“, „Einstellungen“, Drucker und Faxgeräte“



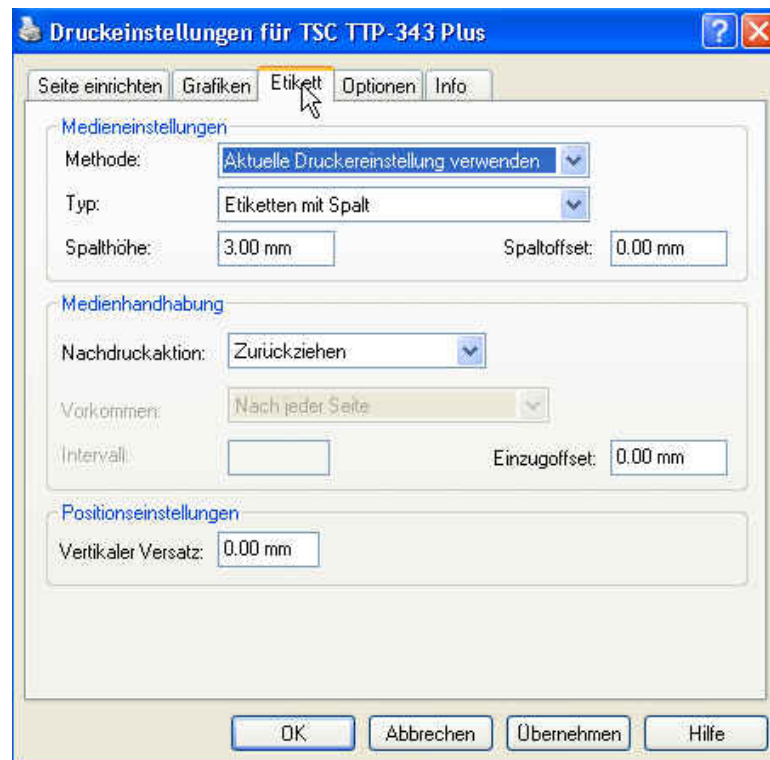
Select the printer „TSC TTP-343 Plus“ (double click).



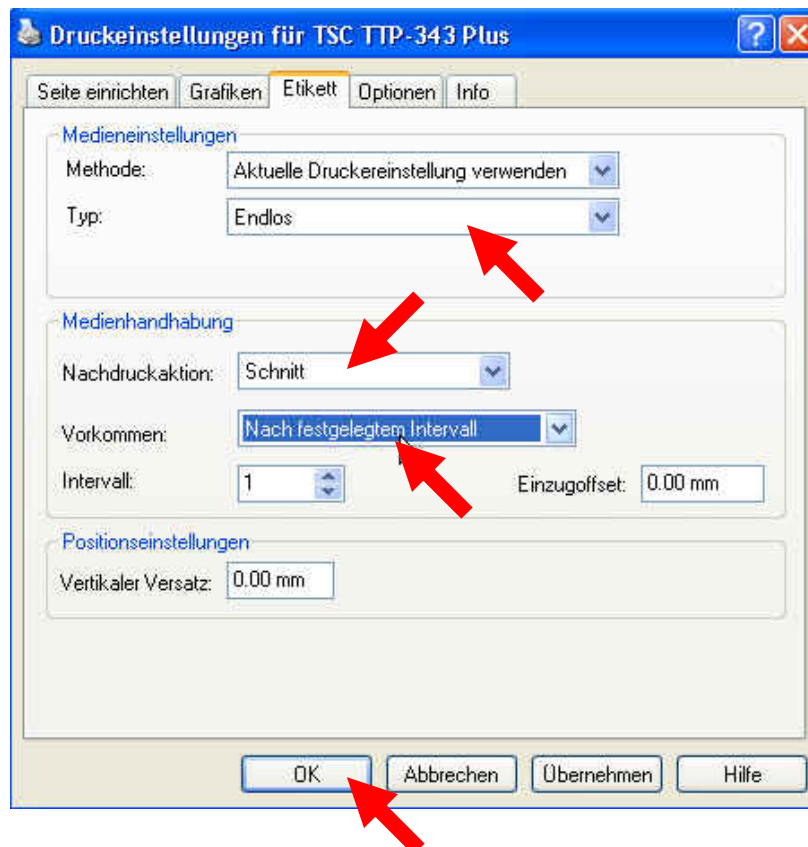
Click on „Drucker“, „Druckereinstellungen“.



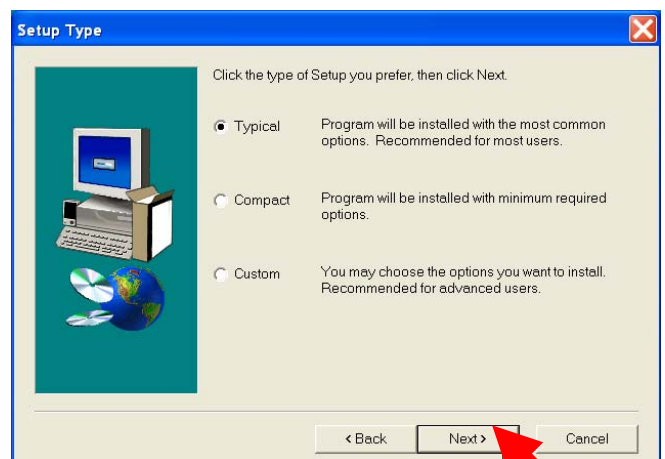
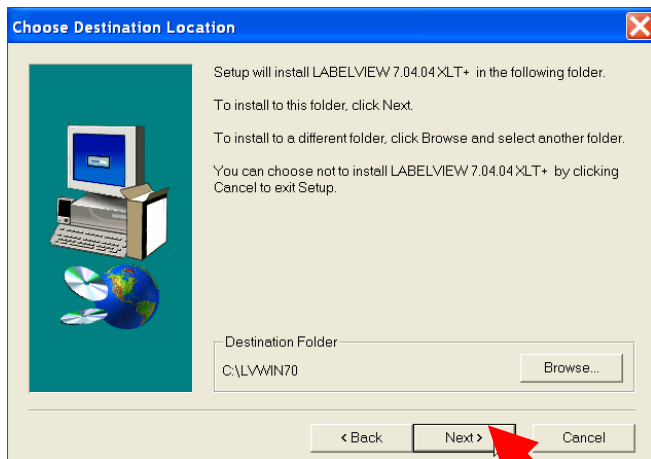
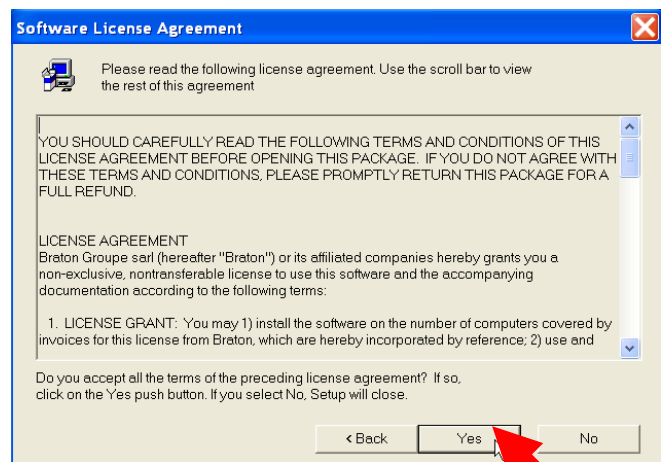
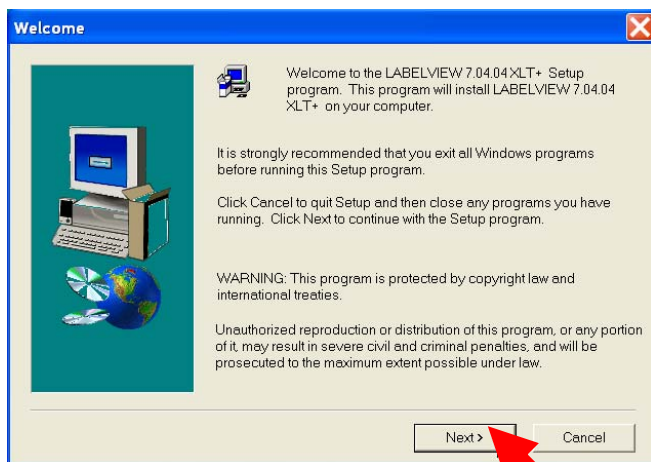
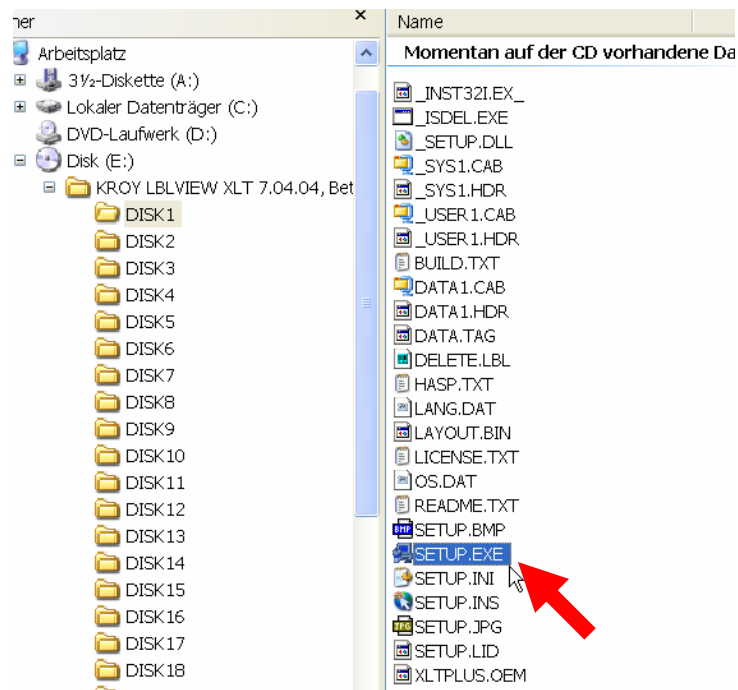
Click on the middle tab „Etikett“.

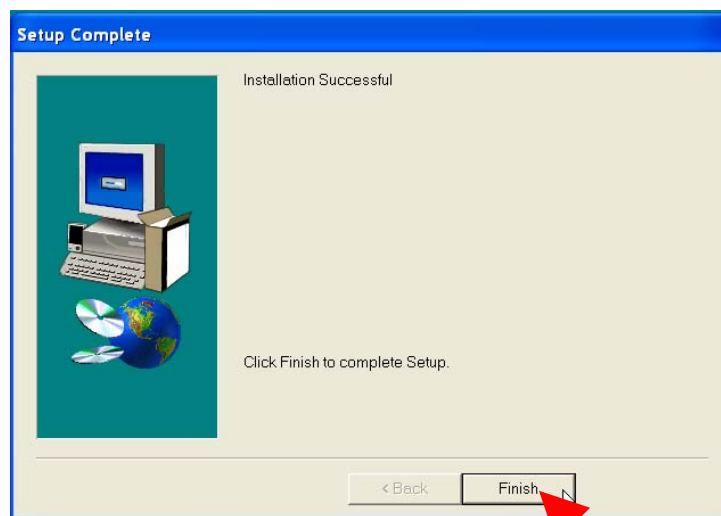


Select the following basic settings:



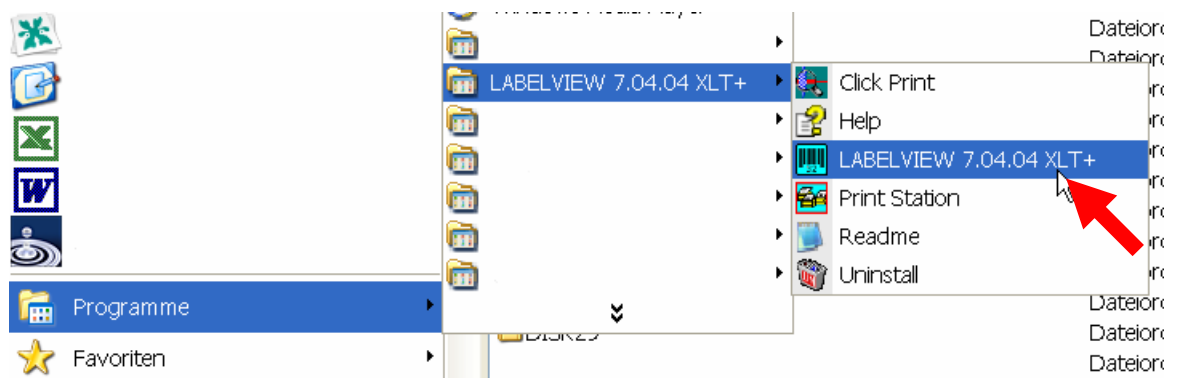
Installation of the Software Labelview with the Printer Driver: Start the file „Setup.exe“

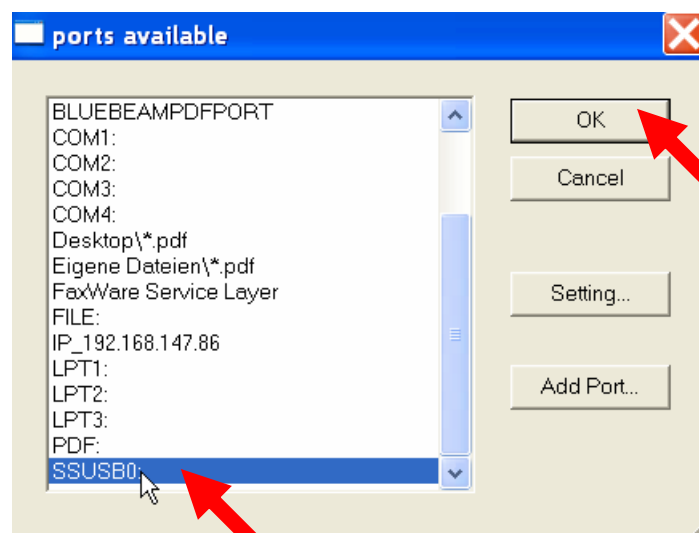
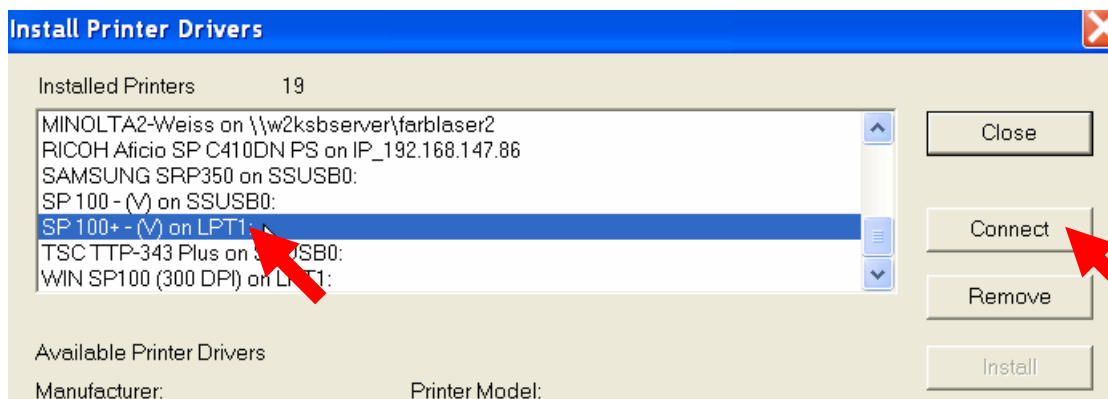
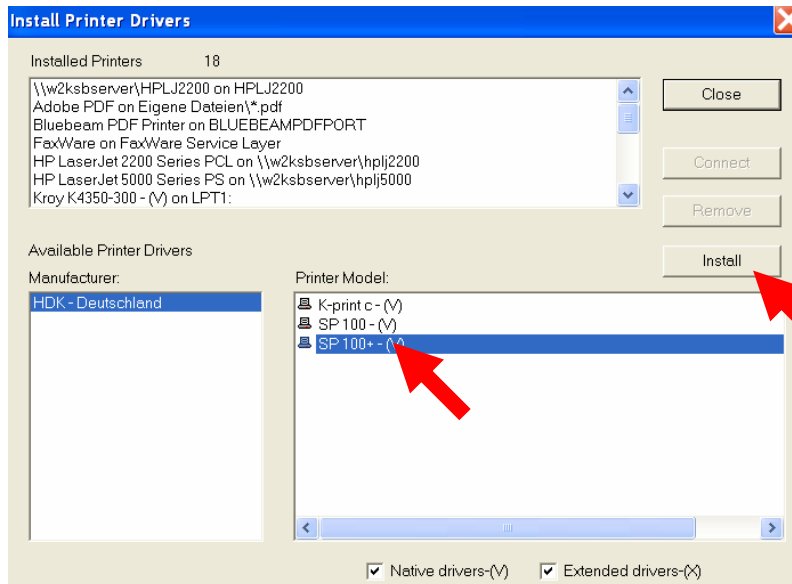


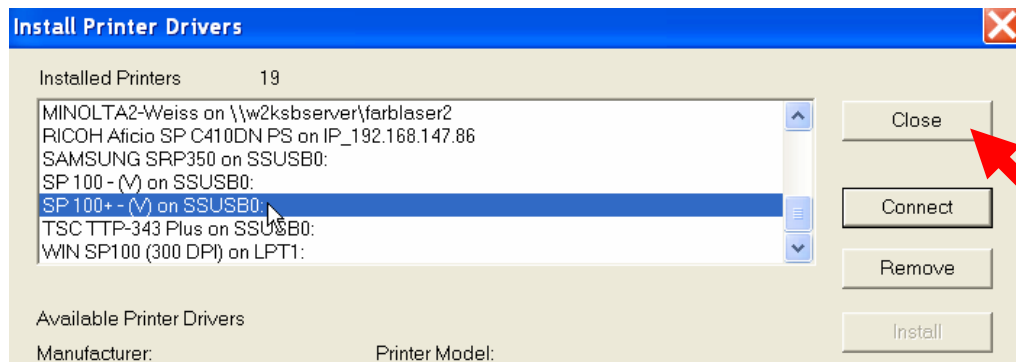


! The computer will be re-booted !

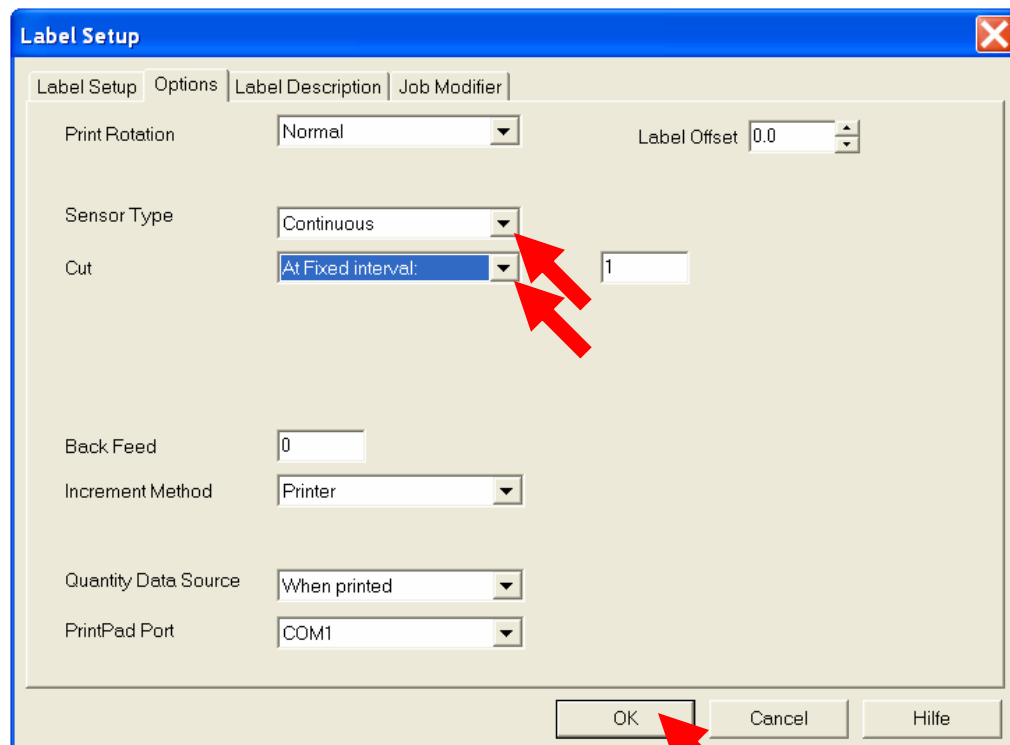
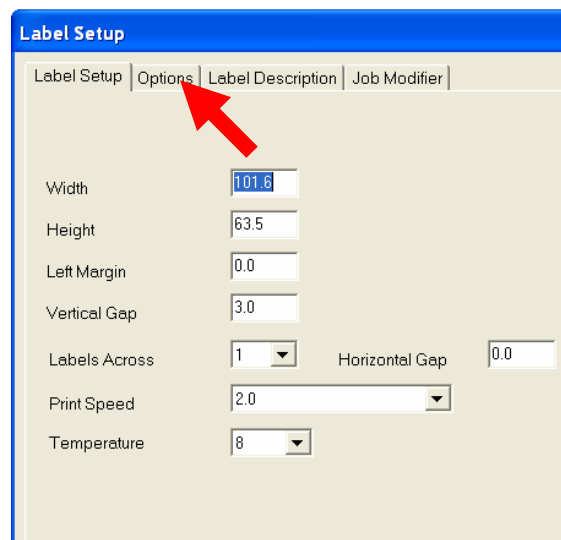
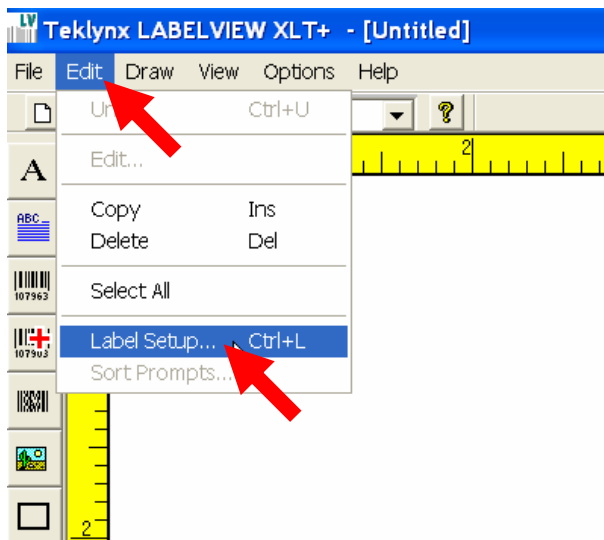
Start the programme „Labelview“:



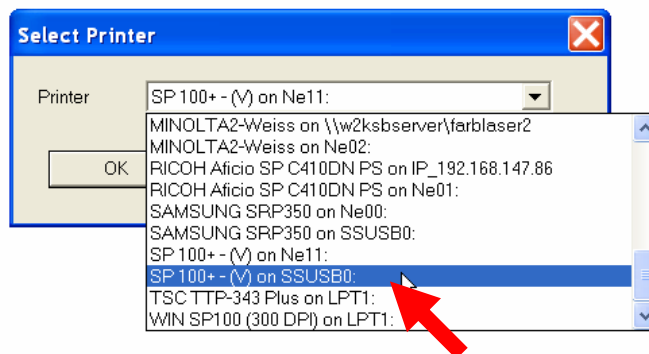
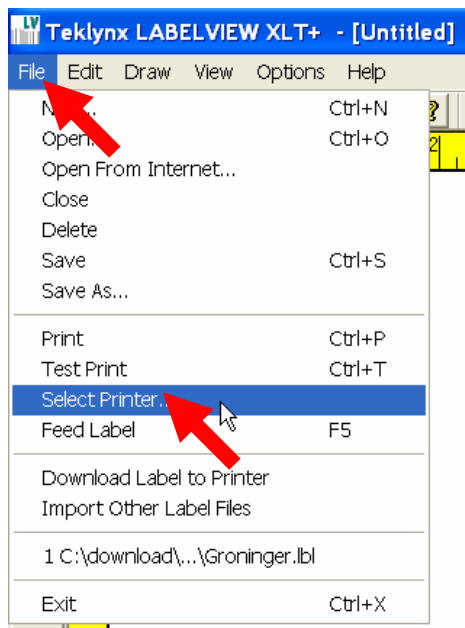




Edit the transport of the tape and the cut options for the label.



Select the printer for the label.



and click on "ok".

Make sure you select the correct printer before printing.

